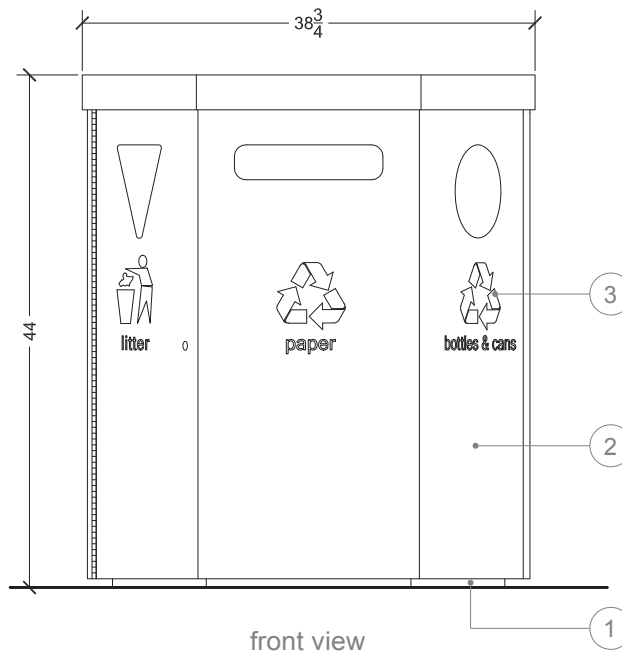
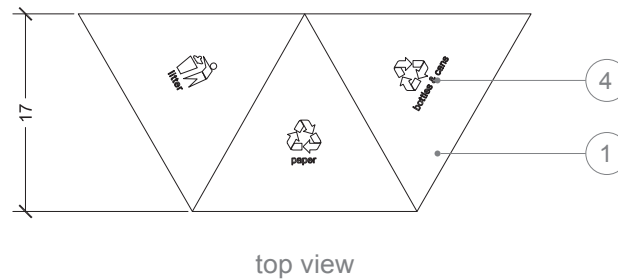


DOWNTOWN RECYCLING RECEPTACLE



shown with powdercoated slate (sg)(t) aluminum lid and base, no. 4 vertically brushed stainless steel body, bead blasted (ma) body, graphics, painted white (sg) lid graphics, and Uptown ash urn.

Downtown is an attractive, clean, and modern solution for public space litter collection and recycling. Constructed of durable stainless steel and powdercoated aluminum available with an array of high quality finishes, Downtown stands up to everyday abuse and changing weather conditions. Receptacles feature 3 separate 16 gallon plastic liners for litter, bottles & cans, and paper with differently shaped corresponding openings. Instructional graphics aid in the proper disposal of waste. Internal separating walls prevent cross contamination. Receptacles are keyed to deter unauthorized access and vandalism.



installation & maintenance

Units come preassembled and ready for installation. Tamper-proof stainless steel mounting hardware is provided to securely anchor product in place. Powdercoated surfaces can be cleaned using a clean, soft, non-abrasive cloth with warm water and mild detergent. Other commercially available all-purpose cleaners such as Simple Green ® can be used to clean and protect all surfaces. Denatured alcohol and a clean, soft, non-abrasive cloth can be used to clean oils left on all stainless steel surfaces. Commonly available cleaners such as Weiman ®, Zep ®, 3M ®, Simple Green ®, and other stainless steel cleaners can also be used to clean and protect all stainless steel surfaces. Avoid abrasive cleaners and cleaners containing chlorine on all surfaces.

specifications subject to change without notice

These are the standard material and finishing options we offer for customization. Every component can be customized to suit your vision. The modularity lends itself to multiple and exciting design configurations that can be tailored to an individual's taste. For options such as powdercoating, give us a call - we have an array of colors to choose from. If you have a unique finish or exotic material in mind for a certain component that we do not list, let us know and we may be able to implement it into your design.



color/finish swatch

steel

sky blue (g)

(g) gloss (sg) semi-gloss
(ma) matte (m) metallic
(t) textured

1. lid and base



aluminum
quartz (sg)(t)



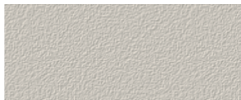
aluminum
flint (sg)(t)



aluminum
slate (sg)(t)



aluminum
coal (sg)(t)



aluminum
pumice (sg)(t)



aluminum
granite (sg)(t)



aluminum
rust (sg)(t)



aluminum
ebony (sg)(t)



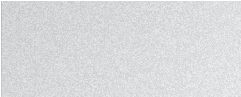
aluminum
brick (sg)(t)



aluminum
wave (sg)(t)



aluminum
moss (sg)(t)



steel
paladin silver (sg)(m)



steel
lead (sg)(m)

2. body



steel
quartz (sg)(t)



steel
flint (sg)(t)



steel
slate (sg)(t)



steel
coal (sg)(t)



steel
pumice (sg)(t)



steel
granite (sg)(t)



steel
rust (sg)(t)



steel
ebony (sg)(t)



steel
brick (sg)(t)



steel
wave (sg)(t)

colors and finishes are approximate, samples available upon request



steel
moss (sg)(t)



steel
paladin silver (sg)(m)



steel
lead (sg)(m)

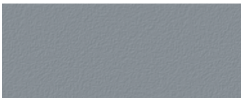


stainless steel
no. 4 vertically brushed



stainless steel
random finish

3. body graphics



stainless steel
bead blast (ma)

available only for no. 4 vertically
brushed stainless steel body



vinyl
black (g)



vinyl
dark grey (g)



vinyl
white (g)

4. lid graphics



painted
black (sg)



painted
dark grey (sg)



painted
white (sg)

colors and finishes are approximate, samples available upon request

Need to find out how much your design will cost? Just fill out the estimation form and you will be contacted to discuss your project. If you have a unique finish or exotic material in mind for a certain component that we do not list, fill in the appropriate field with the manufacturer's product code or a short description. Components listed as optional are not required to have a complete product. Have multiple designs in mind? Just fill out and fax or email a seperate form for each configuration.

product information

| | | | |
|---------------|--------------------------------------|-------------------------|---------|
| product | <u>downtown recycling receptacle</u> | quantity | <u></u> |
| lid and base | <u></u> | body | <u></u> |
| body graphics | <u></u> | lid graphics (optional) | <u></u> |

client information

| | |
|------------------|---------|
| name | <u></u> |
| company | <u></u> |
| address | <u></u> |
| telephone number | <u></u> |
| fax number | <u></u> |
| email address | <u></u> |

project information

| | |
|------------------|---------|
| delivery address | <u></u> |
| delivery date | <u></u> |
| project name | <u></u> |
| project location | <u></u> |