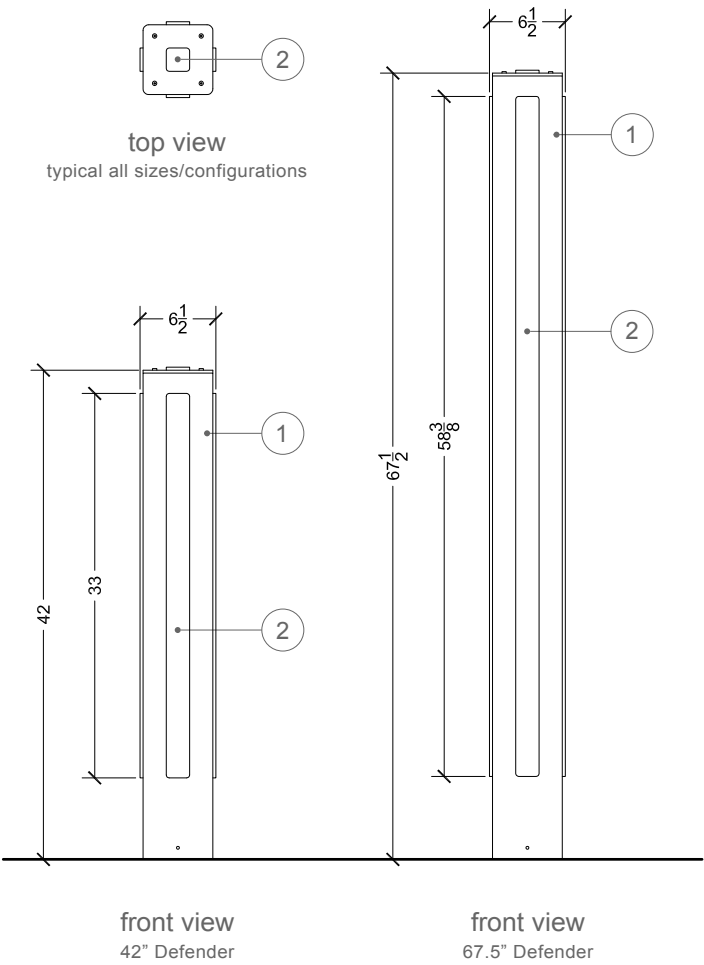


DEFENDER LIGHT BOLLARD



42" Defender shown with hot-dip galvanized steel body, clear frosted polycarbonate lens, and white 4500k lighting

The Defender light bollard is a stout, practical lighting solution with a contemporary industrial design suited for high-traffic areas requiring additional light and a high level of reliability and maintenance-free operation. The Defender is constructed from 1/4" steel tubing with a standard hot-dipped galvanized finish for years of corrosion resistance. The standard lens is made from frosted clear polycarbonate making it extremely impact and vandal resistant. All of our lighting components are UL listed so you can count on their quality; you can also be assured of energy efficiency with our choice of long-life LEDs as a light source. Offered in an array of sizes, powdercoat colors, textures, and materials allows the Defender to be integrated into any environment. All of our products are environmentally friendly by nature; the main structural content of this bollard is steel that contains a recycled content of 95%-100%. This product can also be easily recycled at the end of its life and is manufactured in an environmentally conscious process.



installation & maintenance

Units come preassembled and ready for installation. Tamper-proof stainless steel mounting hardware is provided to securely anchor product in place. Powdercoated surfaces can be cleaned using a clean, soft, non-abrasive cloth with warm water and mild detergent. Other commercially available all-purpose cleaners such as Simple Green® can be used to clean and protect all surfaces. Denatured alcohol and a clean, soft, non-abrasive cloth can be used to clean oils left on all stainless steel surfaces. Commonly available cleaners such as Weiman®, Zep®, 3M®, Simple Green®, and other stainless steel cleaners can also be used to clean and protect all stainless steel surfaces. Avoid abrasive cleaners and cleaners containing chlorine on all surfaces.

specifications subject to change without notice

These are the standard material and finishing options we offer for customization. Every component can be customized to suit your vision. The modularity lends itself to multiple and exciting design configurations that can be tailored to an individual's taste. For options such as powdercoating, give us a call - we have an array of colors to choose from. If you have a unique finish or exotic material in mind for a certain component that we do not list, let us know and we may be able to implement it into your design.



color/finish swatch

steel

sky blue (g)

material

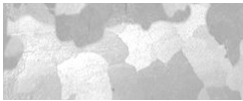
color/finish name

(g) gloss (sg) semi-gloss

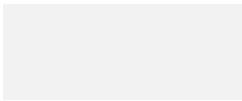
(ma) matte (m) metallic

(t) textured

1. body



steel  
hot-dip galvanized



steel  
glacier white (g)



steel  
light grey (g)



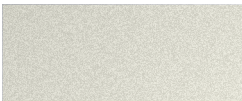
steel  
middle grey (g)



steel  
black (g)



steel  
paladin silver (sg)(m)



steel  
sunrise silver (sg)(m)



steel  
nickel (sg)(m)

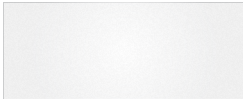


steel  
lead (sg)(m)



steel  
goodnight (sg)(m)

2. lens



polycarbonate  
clear frosted

colors and finishes are approximate, samples available upon request

3. lighting

---



LED  
white 3000k



LED  
white 4500k



LED  
white 5500k



LED  
white 6500k



LED  
white 8300k



LED  
red



LED  
green



LED  
blue



LED  
amber

colors and finishes are approximate, samples available upon request

Need to find out how much your design will cost? Just fill out the estimation form and you will be contacted to discuss your project. If you have a unique finish or exotic material in mind for a certain component that we do not list, fill in the appropriate field with the manufacturer's product code or a short description. Components listed as optional are not required to have a complete product. Have multiple designs in mind? Just fill out and fax or email a seperate form for each configuration.

product information

product	defender light bollard	quantity	
size		body	
lens		lighting	

client information

name	
company	
address	
telephone number	
fax number	
email address	

project information

delivery address	
delivery date	
project name	
project location	