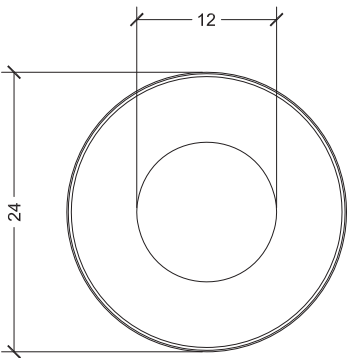


CYL TRASH RECEPTACLE

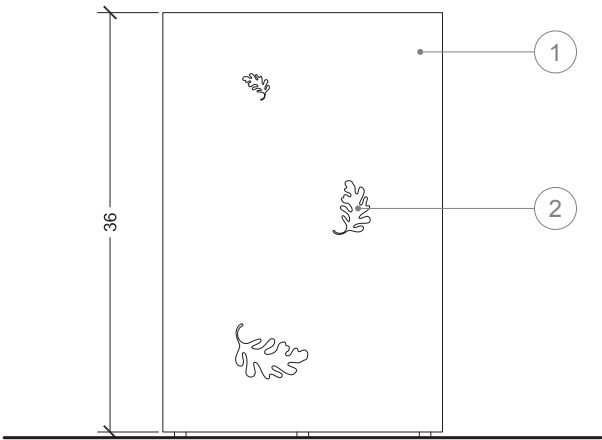


(background) shown with crimson red (g) powdercoated steel body and hickory body pattern (foreground) shown with yellow (g) powdercoated steel body and oak body pattern

Suitable for indoor and outdoor environments, Cyl is our most customizable and versatile trash receptacle. We are able to custom cut into the body of the receptacle your company's logo, town or city name, custom patterns such as leaves, or leave the body plain. You decide. Choose your powdercoat color and you have a custom product without the custom price. Promote recycling by grouping 3 receptacles together each with a corresponding cutout and color. Receptacles are constructed of rolled and fully welded steel with a durable 32 gallon plastic liner. Receptacles are serviced by removing the lid and pulling the liner straight out through the top. A central anchor and 4 separate levelers ensure proper and secure installation.



top view



front view

installation & maintenance

Units come preassembled and ready for installation. Tamper-proof stainless steel mounting hardware is provided to securely anchor product in place. Powdercoated surfaces can be cleaned using a clean, soft, non-abrasive cloth with warm water and mild detergent. Other commercially available all-purpose cleaners such as Simple Green ® can be used to clean and protect all surfaces. Denatured alcohol and a clean, soft, non-abrasive cloth can be used to clean oils left on all stainless steel surfaces. Commonly available cleaners such as Weiman ®, Zep ®, 3M ®, Simple Green ®, and other stainless steel cleaners can also be used to clean and protect all stainless steel surfaces. Avoid abrasive cleaners and cleaners containing chlorine on all surfaces.

specifications subject to change without notice

These are the standard material and finishing options we offer for customization. Every component can be customized to suit your vision. The modularity lends itself to multiple and exciting design configurations that can be tailored to an individual's taste. For options such as powdercoating, give us a call - we have an array of colors to choose from. If you have a unique finish or exotic material in mind for a certain component that we do not list, let us know and we may be able to implement it into your design.



steel

sky blue (g)

color/finish swatch

material

color/finish name

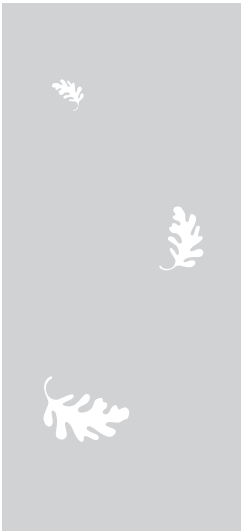
(g) gloss (sg) semi-gloss
(ma) matte (m) metallic
(t) textured

1. body

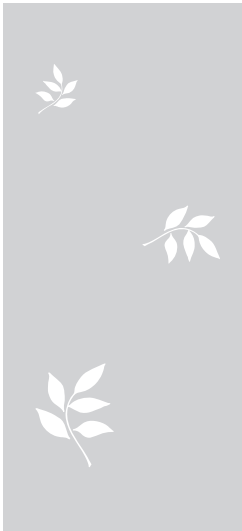
				
steel glacier white (g)	steel light grey (g)	steel middle grey (g)	steel black (g)	steel pebble (g)
				
steel beige (g)	steel chocolate (g)	steel yellow (g)	steel honey (g)	steel sunset orange (g)
				
steel orange (g)	steel red (g)	steel crimson red (g)	steel plum (g)	steel sky blue (g)
				
steel royal blue (g)	steel wizard blue (g)	steel soot (g)	steel forest green (g)	steel grass green (g)
				
steel swamp (g)	steel cactus (g)	steel chartreuse (g)	steel paladin silver (sg)(m)	steel lead (sg)(m)

colors and finishes are approximate, samples available upon request

2. body pattern



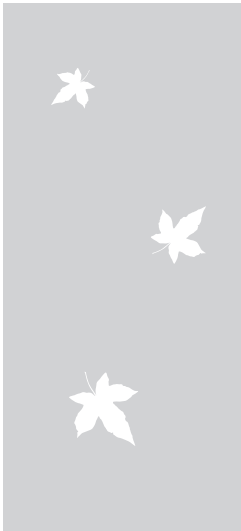
oak



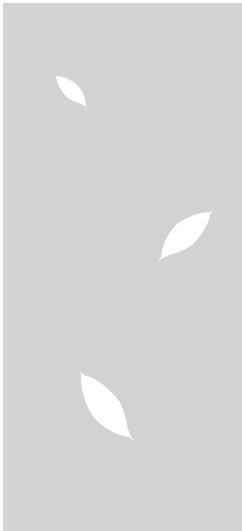
hickory



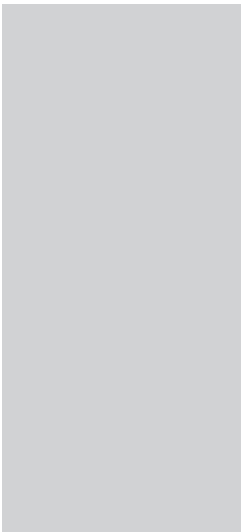
persimmon



maple



magnolia



solid



custom

colors and finishes are approximate, samples available upon request

Need to find out how much your design will cost? Just fill out the estimation form and you will be contacted to discuss your project. If you have a unique finish or exotic material in mind for a certain component that we do not list, fill in the appropriate field with the manufacturer's product code or a short description. Components listed as optional are not required to have a complete product. Have multiple designs in mind? Just fill out and fax or email a seperate form for each configuration.

product information

product	cyl trash receptacle	quantity	
body		body cutouts	

In addition to this form, please fax your logo or a drawing of what you wish to have cut. For more accurate pricing, email the logo or drawing in a vectorized format.

client information

name	
company	
address	
telephone number	
fax number	
email address	

project information

delivery address	
delivery date	
project name	
project location	